

Main
Street
East

OFFICE FOR LEASE

229-259 E. Michigan Ave. | Suite 107 | Kalamazoo, MI 49007

Property Details

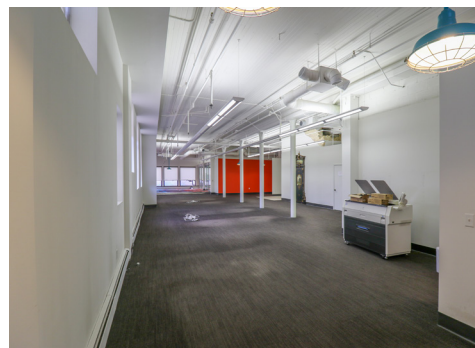
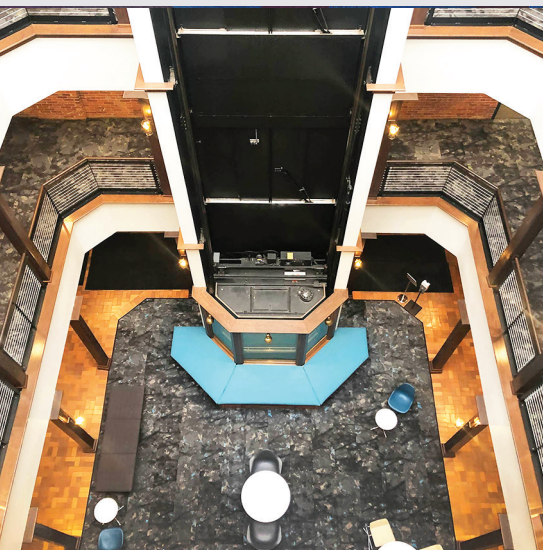
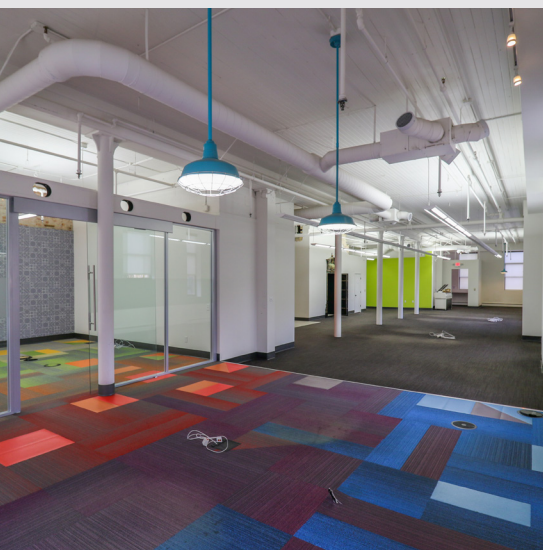
Historic multi-client building offering flexible and innovative high-end suites consisting of 500 SF up to 8,000 SF.

The building features turn-of-the-century charm with exposed brick and natural wood, along with an abundance of natural light including a 4-story open atrium ideal for future networking events.

Suites comprise of different layouts ranging from hard offices to open concepts with vaulted ceilings as well as great views of downtown Kalamazoo.

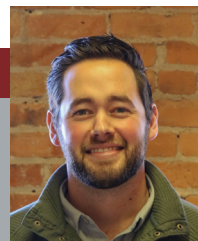
Amenities

- Ample parking available
- Accessible on-site management
- Steps away from banking, restaurants, shopping, parks, and more
- Conveniently located in downtown Kalamazoo within the heart of the business and entertainment district



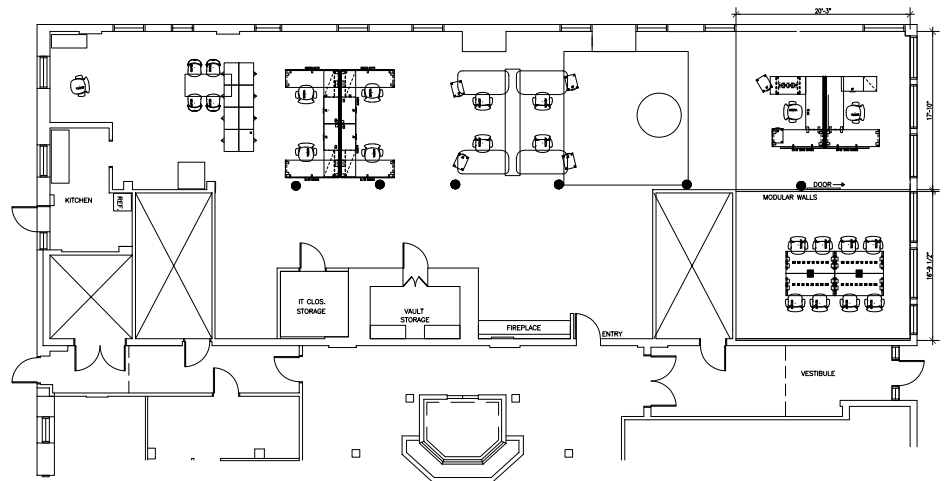
TREYSTAR™
Locate. Partner. Grow.

Connor Sampson
Office Leasing
csampson@treystar.com



Suite Description

- This space is 3,033 square feet
- Ground-level space with fantastic visibility
- Historic details within the space
- Modern amenities compliment throughout
- Dedicated kitchen within the space
- Access through atrium & directly outdoors



OFFICE BUILDING
201 E. MICHIGAN AVENUE KALAMAZOO, MICHIGAN 49007
SCALE: NOT TO SCALE

FIRST FLOOR PLAN - SUITE 107

