

OFFICE FOR LEASE

161 E. Michigan Ave. | Kalamazoo, MI 49007



Property Details

The Haymarket Building is a 6-story multi-client building offering flexible and innovative suites consisting of approximately 45,000 SF of Class A space. The building embodies turn-of-the-century architecture coupled with modern construction.

Features include open concept suite with elegant finishes, exposed brick showcasing plenty of warmth and character, as well as an abundance of natural light and great views of downtown Kalamazoo.

Amenities

- Dedicated parking
- Accessible on-site management
- Steps away from banking, restaurants, shopping, parks, and more
- Conveniently located in downtown Kalamazoo within the heart of the business and entertainment district

Major Tenants

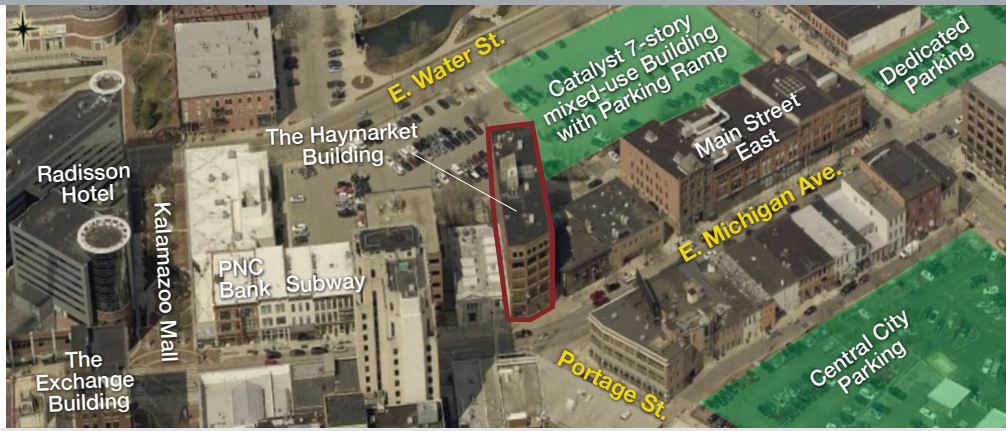
- WL Socialhouse
- Eckert Wordell
- Counterpoint Pilates
- Innovative Analytics
- Kalamazoo County Ready 4s



Haymarket Building

Buildings Description

- 6-story multi-client building consisting of approximately 45,000 SF of Class A space
- Offering flexible and innovative suites ranging from 2,500 to 7,000 SF
- Features include open concept suite with elegant finishes, exposed brick showcasing plenty of warmth and character
- Clients responsible for electricity



Photos Courtesy of Discover Kalamazoo