

NOW AVAILABLE

4432

RETAIL FOR LEASE

4432 W. Main Street | Suite 21 | Kalamazoo, MI 49006

Property Details

Located at the northeast corner of Kalamazoo's busiest commercial intersection (West Main St. and Drake Rd.), Westwood Plaza is a 100,000 SF center offering an excellent location and demographics.

Lease Space Features

This fantastic 6,225sf space features a combination of retail and warehouse space. Complete with a front showroom, a large storage room, a bathroom, and an office, this space could be perfect for your business!

Major Tenants

- Natural Health Center
- Cold Stone Creamery
- Kyoto Hibachi
- Main Street Pub
- Chick-fil-A
- Penn Station
- Biggby Coffee
- X-Golf

Quick Facts

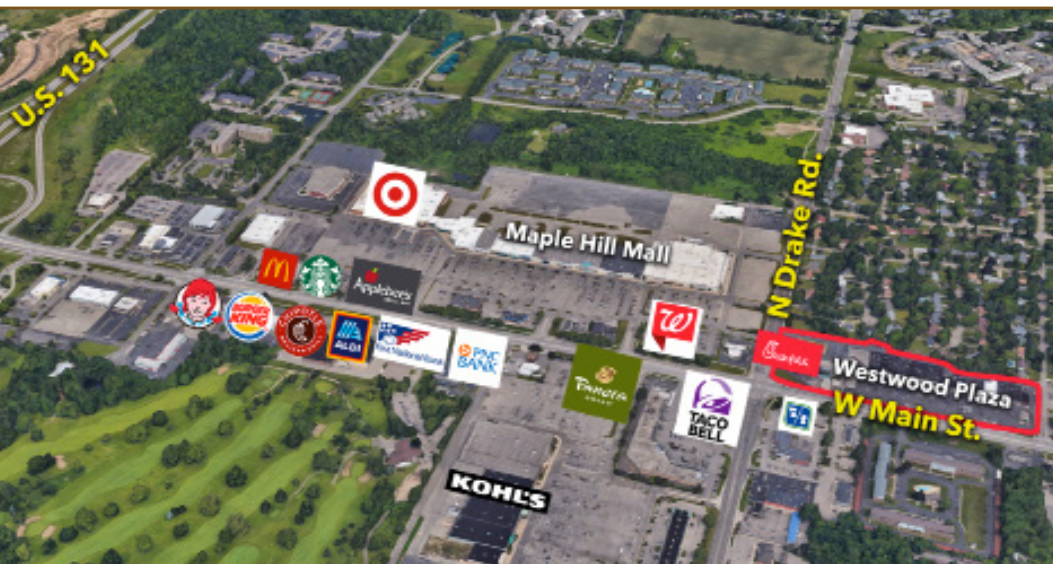
- Traffic Count ADT: 40,000

Average Household Income (ESRI)

| 5 Minutes | 10 Minutes | 15 Minutes |
|-----------|------------|------------|
| \$42,465 | \$44,474 | \$52,653 |

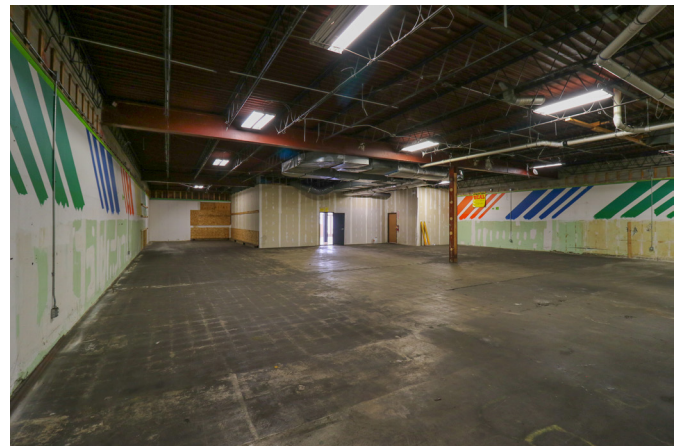
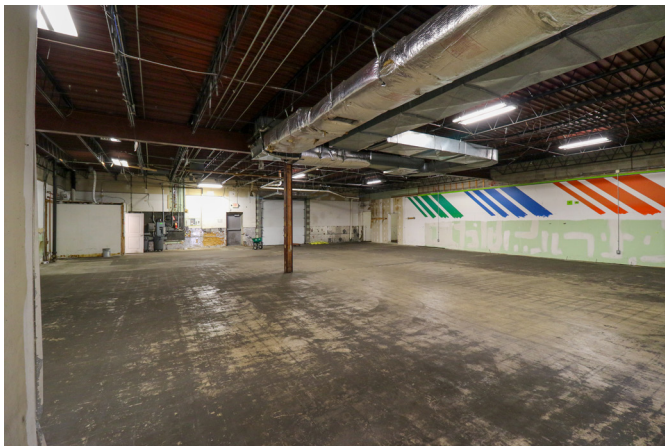
Daytime Population (ESRI)

| 5 Minutes | 10 Minutes | 15 Minutes |
|-----------|------------|------------|
| 23,881 | 92,648 | 198,439 |



Terry Patterson

Leasing & Development Director
269.217.1684 | tpatterson@treystar.com



Floor plan coming soon!